



# Midwest Prospect's Northfield

## Results

1/20/2024

*Nathan Buermann*

**60 Yard Dash Times**

7.34, 7.50

**IF Velocity**

63-65

**OF Velocity**

62-65

**1B - Velocity**

-

**C - Velocity**

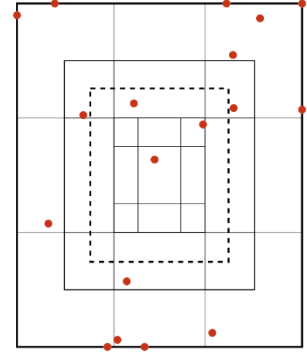
-

**C- Pop Times**

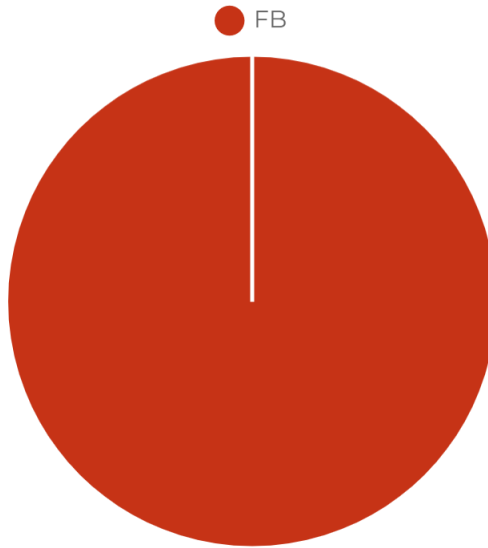
-

### DATA

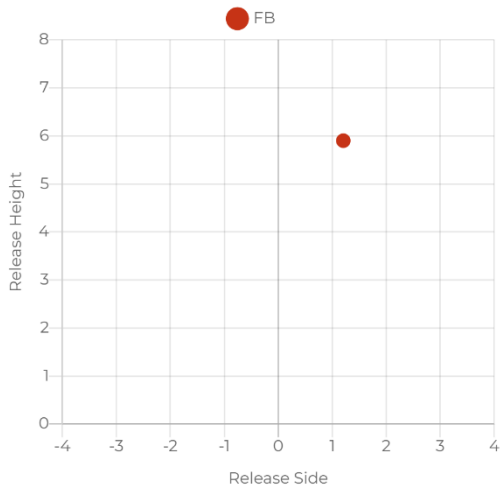
Pitch Type	Velo	Max. Velo	RPM	Max. RPM	V-Break	H-Break	Spin Eff.	Gyro Degree	Spin Dir.	Strike %	R. Angle	H. Angle	R. Height	R. Side
FB	65.5	67.1	1,527	1,642	11.3	9.7	99.1	6	01:23	16.7%	0.2	-2.5	5.9	1.2



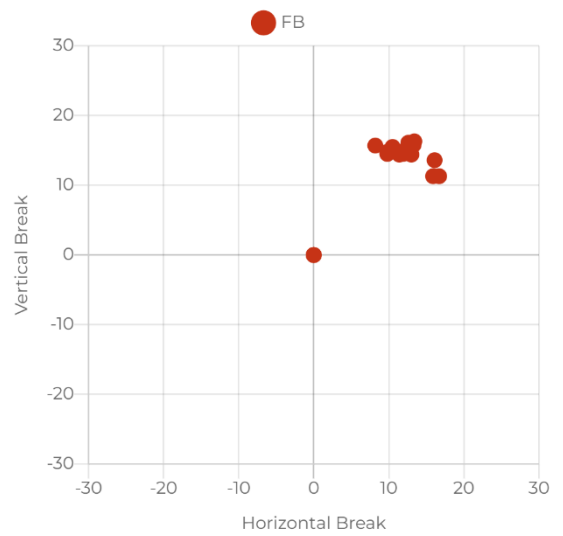
### PITCH TYPE %



### RELEASE AVERAGES



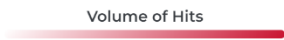
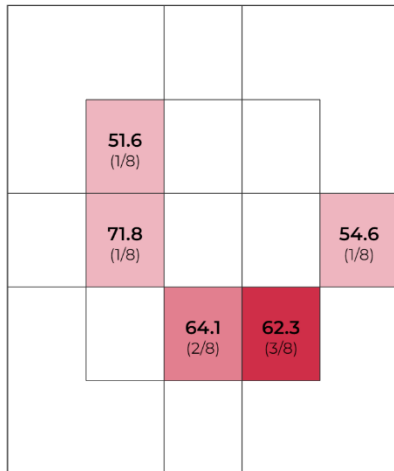
### BREAK PLOT



## DATA

	Avg	Max	Hard Hit Avg		
Exit Velocity	61.6	71.8	69.9	Batting Avg.	0.250
Launch Angle	3.3	50.3	11.2	xwOBA	0.229
Direction	2.9°L	49.6°L	21°L	Slugging	0.286
Distance	24	233	136	Hard Hit %	37.5%
Spin Rate	2,091	3,577	2,232	Bombs %	12.5%
				Ropes %	12.5%

### EXIT VELOCITY BY ZONE

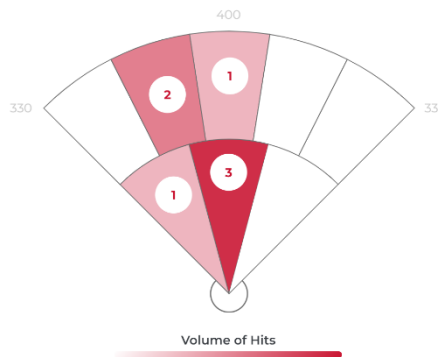


### HIT CLASSIFICATION

- Dribbler
- Ground Ball
- Low Line Drive
- High Line Drive
- Fly Ball
- Pop Up



### HIT VOLUME



Zone	Pull	Middle	Oppo
Volume of Hits	1/7	6/7	0/7
Avg. LA	2.0	24.0	-
Avg. EV	52.0	62.0	-
Avg. Spin	1,309	2,203	-
Avg. Distance	35	154	-

### HIT OUTCOMES

- Single
- Field Out
- CORE.ENUMS.HIT\_OUTCOMES.5

